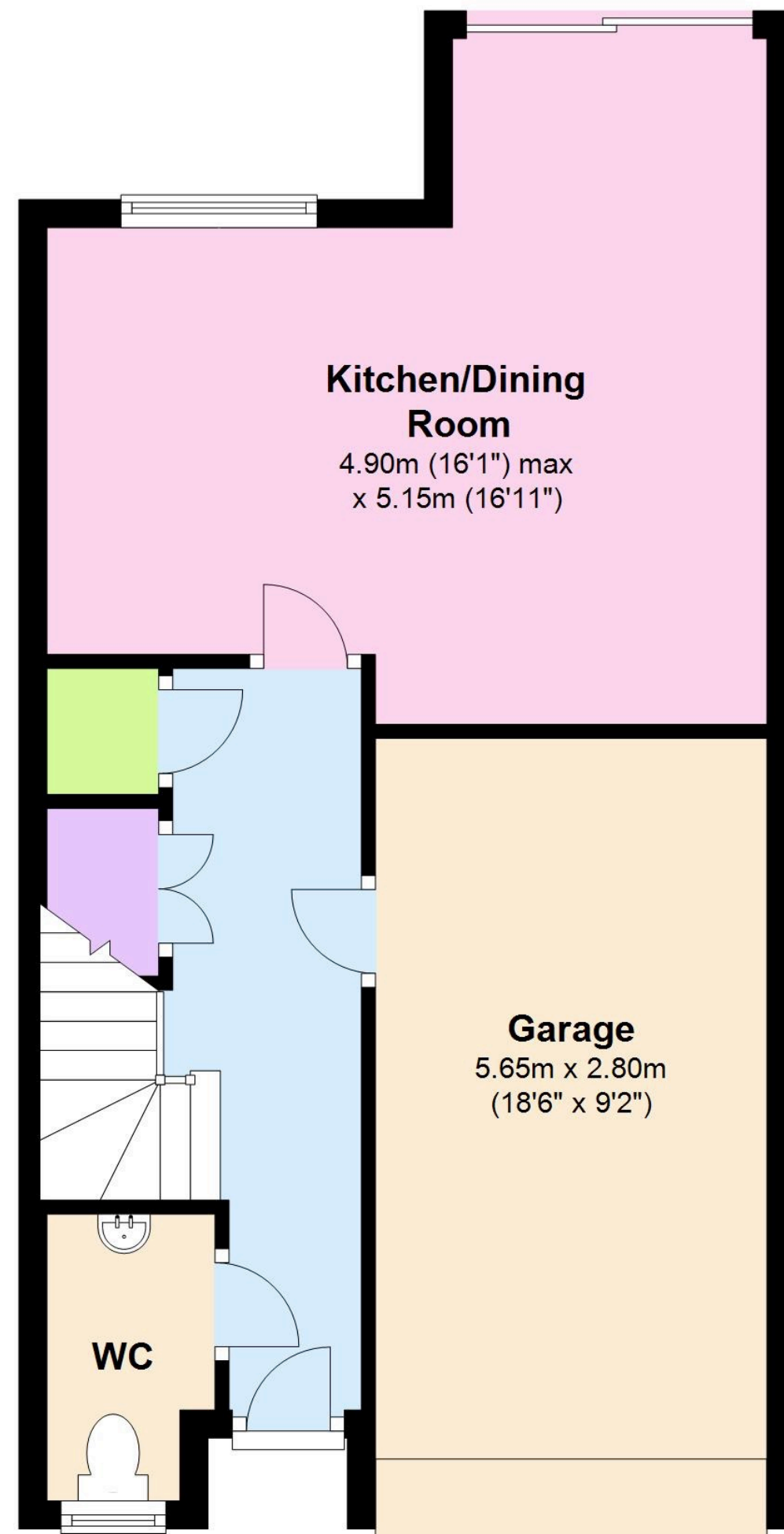


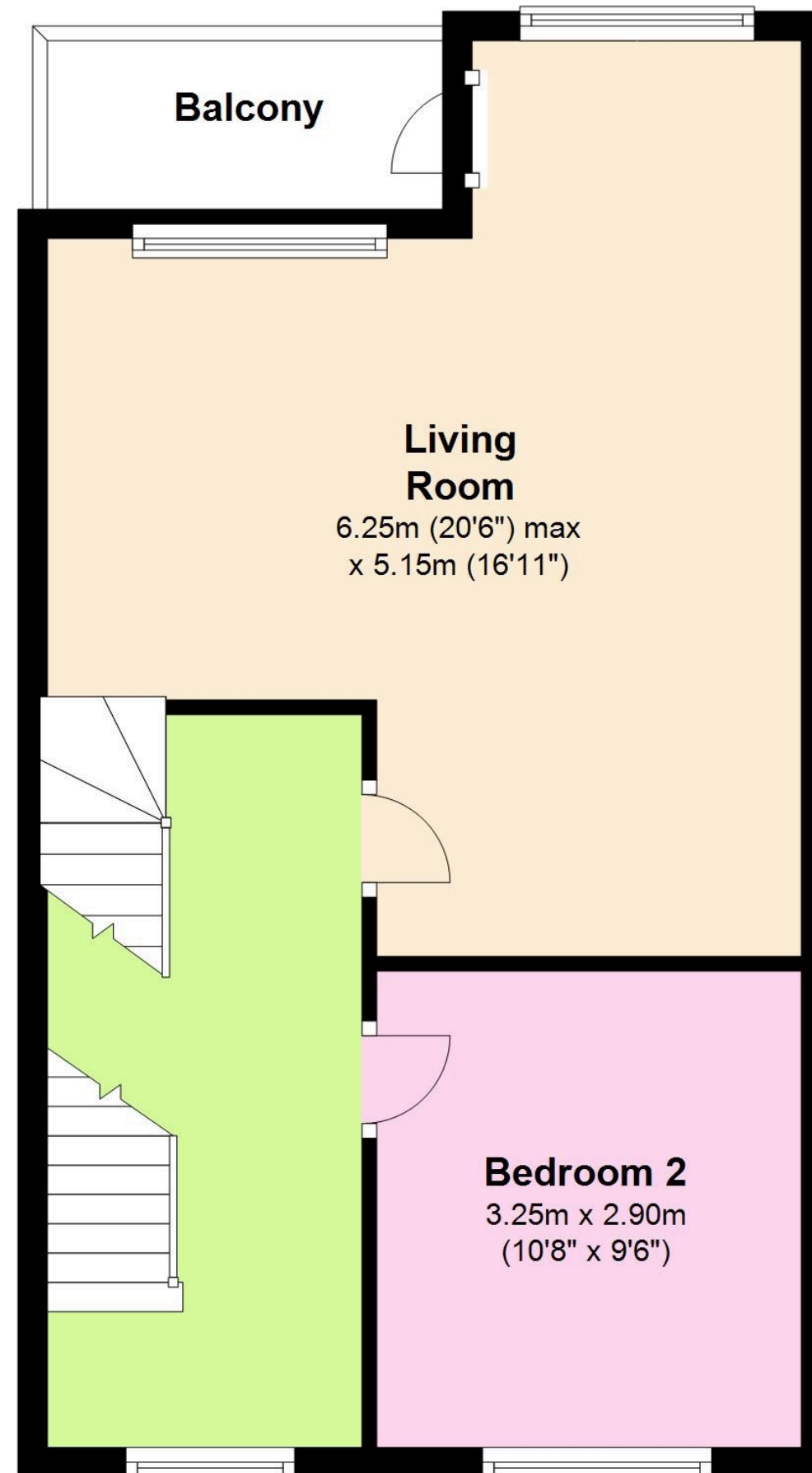
Ground Floor

Approx. 49.5 sq. metres (533.0 sq. feet)



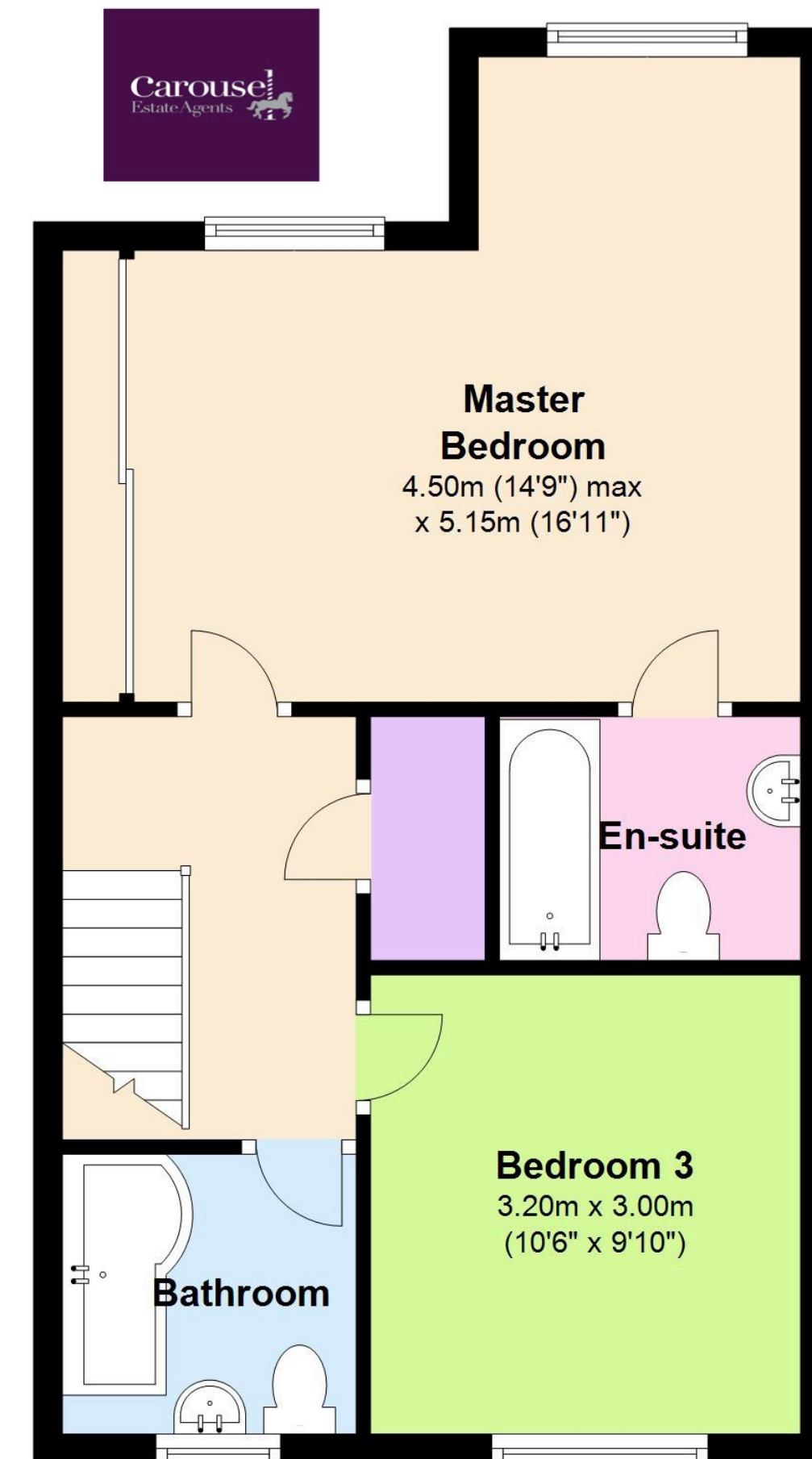
First Floor

Approx. 45.5 sq. metres (489.9 sq. feet)



Second Floor

Approx. 45.5 sq. metres (489.5 sq. feet)



Total area: approx. 140.5 sq. metres (1512.4 sq. feet)

This floor plan is for illustrative purposes only and whilst every attempt has been made to ensure its accuracy, all measurements are approximate and all included elements are only indicative of size, relative proportion and position and no responsibility is accepted for any error, omission or misrepresentation.

Plan produced using PlanUp.